

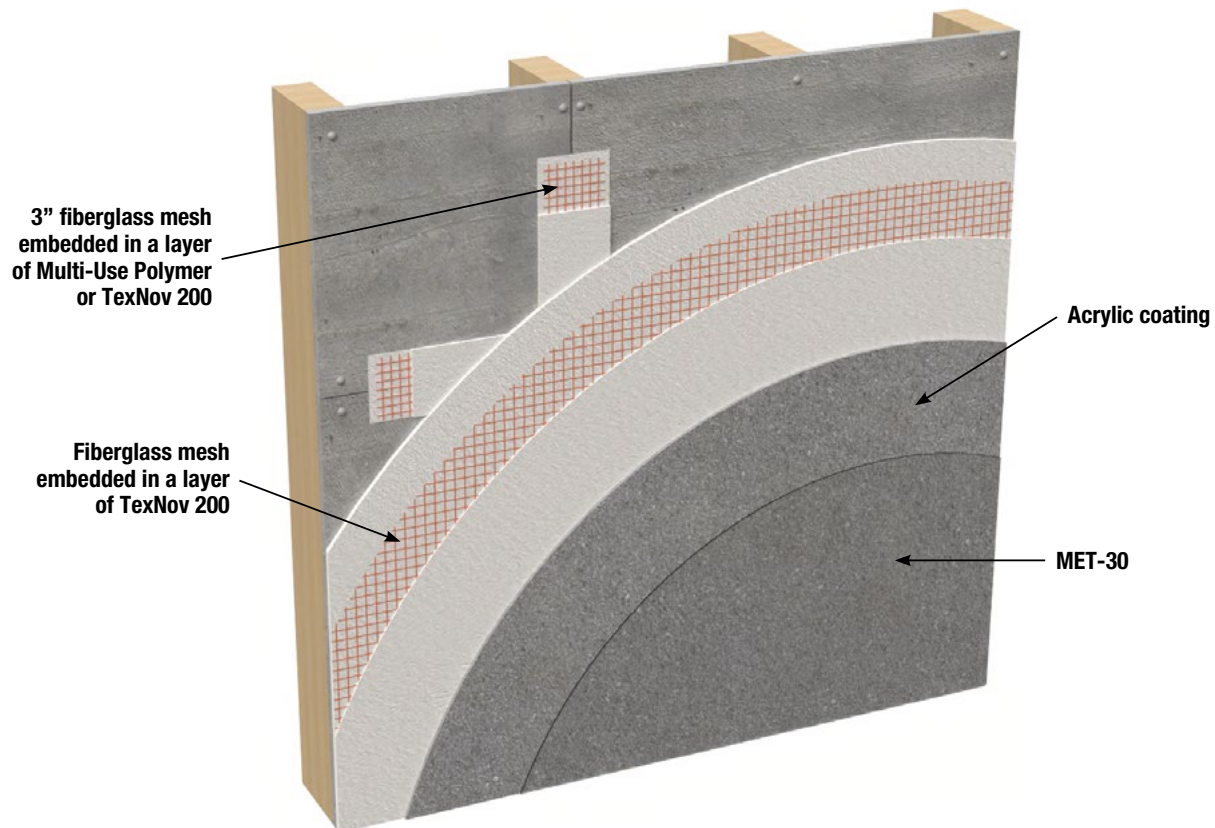


PREPARATION AND APPLICATION PROCEDURE

CONCRETE PANEL

PREPARATION	FINISH	SEALANT
<p>Concrete panel (Durock or Permabase brand)</p> <p>Procedure:</p> <ul style="list-style-type: none"> - Make sure there is no dirt on the surface and that it is completely dry. - Half and half joint: install a 3" STEF fiberglass mesh buried in a coat of TexNov All-purpose Polymer or TexNov 200. - Install a 6 oz. STEF fiberglass mesh over the entire surface buried in a coat of TexNov All-purpose Polymer or TexNov 200. - Let the surface dry over a 24,48-hour period of good weather. 	<p>Procedure:</p> <ul style="list-style-type: none"> - Install an acrylic finish coating coats Sand-Tex or Rus-Tex Acrylic Coating finish coating coat (use the trowel) or 2 coats of TexNov Acrylic Coating (use brush or roller with 10 mm bristles) 24 hours between each coat. - Let the surface dry over a 24,48-hour period of good weather. 	<p>Procedure:</p> <ul style="list-style-type: none"> - On a floor, apply 2 coats of Met-30 Sealant to the panel. Use a brush or roller with 10 mm bristles (24 hours between each coat). - Let the surface dry over a period of 24 hours of good weather.

Maintenance: Clean the surface with **TexNov Surface Preparer** (6 water / 1 Preparer). Let dry and add a coat of **Met-30** Sealant every 3 years or as needed. This should enable you to keep your surface in good condition.



TexNov

839 Joseph-Louis-Mathieu, Sherbrooke J1R 0X3
 www.texnov.com - info@texnov.com
1 877 316-6388

The application instructions and performance characteristics are based on information we believe to be reliable. They are offered to the best of our knowledge, but without guarantee, as conditions and methods of use of our products are beyond our control.